

ST JOHN'S WOOD SQUARE
LONDON NW8



View of the retained facade of 1-7 Queen's Terrace showing where the building behind has been demolished

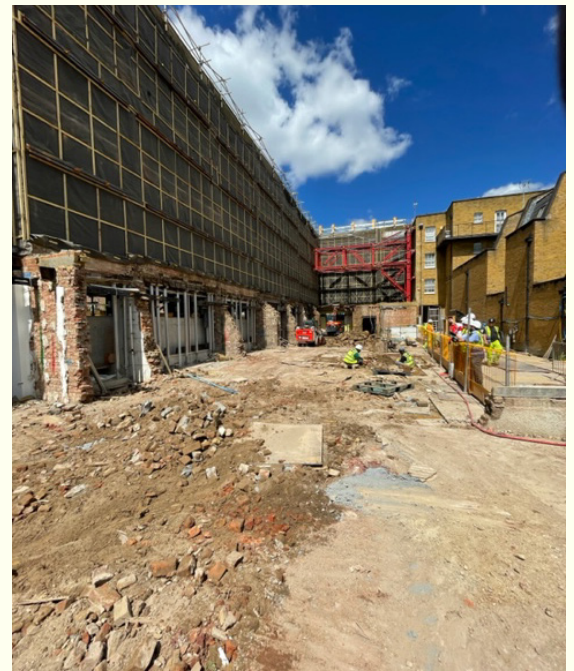
LATEST UPDATES FROM ST JOHN'S WOOD SQUARE: END OF DEMOLITION

We are pleased to share that we have reached two key milestones on St John's Wood Square this month.

Firstly, McGee have completed the demolition of 1-7 Queen's Terrace and you will now be able to see just the building facade held up by the bright yellow facade retention system (above). This means that we have now completed all demolition works for the project, with future works focussing on the construction of the new buildings, gardens and roads.

Secondly, McGee have now finished pouring a new ground floor slab in the Riding School. This will stabilise the building ahead of the basement excavation and restoration works planned for the summer.

We are now around 60% of the way through the excavation works in the central area, where we are preparing the basement structures for the new buildings. These ground works are expected to continue until mid 2025.



1-7 QUEEN'S TERRACE DEMOLITION COMPLETE: View behind the facade with the rear of Walpole Mews on the right of the picture.



NEW FLOOR SLAB FOR THE RIDING SCHOOL: View of the extensive works going on inside the Riding School to pour the new concrete floor.



Prefer to receive these newsletters by email?

Please let us know by updating your preferences using the QR code opposite or by emailing us at the address below with your preference and your home address.

info@sjwsservices.com

WHAT'S HAPPENING NEXT: JULY - SEPTEMBER 2024

THREE-MONTH LOOK AHEAD

The next three months will see new activity on Block 9 (corner of Queen's Grove and Queen's Terrace), Block 5 (north-east corner of the site) and the Riding School.

Through July and August, piling works will take place on Block 9 ahead of a new ground floor being laid in September, and prior to construction starting on the new building.

The Block 5 superstructure is now under construction and by August you will start to see the new building appear above the hoarding line.

The focus for the Riding School will be excavation of the basement below the new ground floor slab.

The table below provides an overview of some of the key activities taking place over the coming months and provides an indication of what to expect. However, please note dates may be subject to change as works progress.

Date	Key Activities
July 2024	<ul style="list-style-type: none">Block 9 (1-7 Queens Terrace) piling to commenceBlock 5 concrete frame construction underway in the north east corner of the siteCapping beam construction continues on the western and eastern side of the siteExcavation and construction of the basement will be ongoingRiding School basement excavation commencesTower Crane 4 erection near Ordnance HillTower Crane 14 erection near Queen's Terrace
August 2024	<ul style="list-style-type: none">1-7 Queens Terrace (Block 9) piling concludingBlock 5 concrete frame construction ongoingCapping beam construction continues on the western side of the siteRiding School roof restoration works commencingExcavation and construction of the basement will be ongoingRiding School basement excavation continues
September 2024	<ul style="list-style-type: none">Block 9 Ground floor slab constructionBlock 5 concrete frame construction ongoingRiding School restoration works will be ongoingRiding School basement excavation continuesExcavation and construction of the basement will be ongoing



Simon Howarth is our Community Engagement Manager, responsible for working with local residents, businesses, schools and other stakeholders around St John's Wood.

If you would like to be kept up to date about what is happening at St John's Wood Square, please sign-up to our email mailing list for information on the construction process. You can do this by contacting us on the details below:

Phone: 0203 109 0215
Email: Info@sjwsservices.com

KEEPING IN CONTACT

OUR SITE WORKING HOURS

Our working hours for the construction phase, as agreed with Westminster City Council, are as follows:

Monday to Friday 08.00 to 18.00
Saturdays 08.00 to 13.00

No work is normally allowed after 18.00, Monday to Friday, on Saturday afternoons or on Sundays and public holidays.

Where a machine operates with continuous or repetitive noise, we aim to work with respite breaks to limit the impact on neighbours.

Whenever possible, we will notify local residents of any variation to the above hours or work that might cause unusual disruption, such as out of hours deliveries.

Contact details for the on site security team

Out of hours, you can contact our site security on **07734 739 849**. This number is open 24 hours a day / 7 days a week.



Considerate Constructors

The project is registered with the national Considerate Constructors Scheme as an "Ultra Site", aiming to be among the best run construction sites in the country. We are also committed to comply with Westminster City Council's "Code of Construction Practice."

Both these schemes commit contractors to be considerate and neighbourly as well as clean, respectful, safe, environmentally conscious, responsible and accountable.

