

ST JOHN'S WOOD SQUARE
LONDON NW8



View of the completed northern boundary wall with Rossetti Mews (Riding School on left of photo).

WHAT HAS BEEN HAPPENING ON THE ST JOHN'S WOOD SQUARE SITE: MAY 2024

We are now getting to the end of the demolition phase at St John's Wood Square and we are starting to see the permanent structures emerging.

The new boundary wall with Rossetti Mews, at the northern end of the site, has recently been completed (pictured above) along with the walls for the future Sanctuary Garden situated behind Queen's Grove.

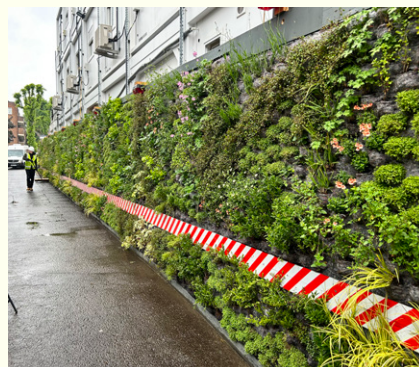
The deconstruction of 1-7 Queen's Terrace is progressing behind the

facade retention structure and is due to be finished by the end of June, ready for piling works to start and a new ground floor slab to be poured.

We have also just completed the installation of new vertical gardens on the hoardings in front of our welfare units on Queen's Terrace. These green walls are not just intended to be visually appealing, but also play a part in soaking up CO₂.



1-7 QUEEN'S TERRACE DEMOLITION: Demolition works at 1-7 Queen's Terrace are on target. By the end of June, the building should have been reduced to ground level.



NEW GREEN HOARDINGS: New living hoardings have now been installed on Queen's Terrace to match those on Ordnance Hill.

USE OF LOW CARBON CONCRETE AT ST JOHN'S WOOD SQUARE

As part of our ambitions to reduce carbon emissions and be environmentally responsible, we are using low carbon concrete throughout the build wherever it is appropriate.

Low carbon concrete is a type of concrete that has a lower carbon footprint than traditional concrete. This is achieved through the use of environmentally friendly materials and production processes that reduce the amount of carbon dioxide (CO₂) emitted during the production of the concrete.

At St John's Wood Square, we are using a concrete mix that has a carbon intensity of 47% less than a traditional concrete mix.



Prefer to receive these newsletters by email?

Please let us know by updating your preferences using the QR code opposite or by emailing us at the address below with your preference and your home address.

info@sjwsservices.com

WHAT'S HAPPENING NEXT: JUNE - AUGUST 2024

THREE-MONTH LOOK AHEAD

The demolition of 1-7 Queen's Terrace is due to conclude by the end of June, which will mark the completion of all demolition works on the site. The focus moving forward will be the basement construction as well as the start of the 'shell and core' construction (building structures) and McGee are due to start with construction of the first concrete frame for Block 5 in the north-east corner of the site this month.

McGee will also be pouring a new concrete ground floor slab in the Riding School later this month, ahead of restoration works commencing in July.

The table below provides an overview of some of the key activities taking place over the coming months. These provide an indication of what to expect on site but may be subject to change as works progress.

Date	Key Activities
June 2024	<ul style="list-style-type: none">• Completion of 1-7 Queen's Terrace demolition works• Block 5 concrete frame construction to start• Block 7 Ground floor slab will be poured• Capping beam construction on the western side of the site• Basement excavation and muck away will continue• Construction of the basement will be ongoing• Tower Crane 4 erection near Ordnance Hill
July 2024	<ul style="list-style-type: none">• 1-7 Queens Terrace (Block 9) piling to commence• Block 5 concrete frame construction ongoing• Riding School roof restoration works will be underway• Basement excavation will continue• Construction of the basement will be ongoing• Tower Crane 14 erection near Queen's Terrace
August 2024	<ul style="list-style-type: none">• 1-7 Queens Terrace (Block 9) piling continues• Block 5 concrete frame construction ongoing• Riding School restoration works will be ongoing• Basement excavation will continue• Construction of the basement will be ongoing



Simon Howarth is our Community Engagement Manager, responsible for working with local residents, businesses, schools and other stakeholders around St John's Wood.

KEEPING IN CONTACT

If you would like to be kept up to date about what is happening at St John's Wood Square, please sign-up to our email mailing list for information on the construction process. You can do this by contacting us on the details below:

Phone: 0203 109 0215
Email: Info@sjwsservices.com

OUR SITE WORKING HOURS

Our working hours for the construction phase, as agreed with Westminster City Council, are as follows:

Monday to Friday 08.00 to 18.00
Saturdays 08.00 to 13.00

No work is normally allowed after 18.00, Monday to Friday, on Saturday afternoons or on Sundays and public holidays.

Where a machine operates with continuous or repetitive noise, we aim to work with respite breaks to limit the impact on neighbours.

Whenever possible, we will notify local residents of any variation to the above hours or work that might cause unusual disruption, such as out of hours deliveries.

Contact details for the onsite security team

Out of hours, you can contact our site security on **07734 739 849**. This number is open 24 hours a day / 7 days a week.



Considerate Constructors

The project is registered with the national Considerate Constructors Scheme as an "Ultra Site", aiming to be among the best run construction sites in the country. We are also committed to comply with Westminster City Council's "Code of Construction Practice."

Both these schemes commit contractors to be considerate and neighbourly as well as clean, respectful, safe, environmentally conscious, responsible and accountable.

